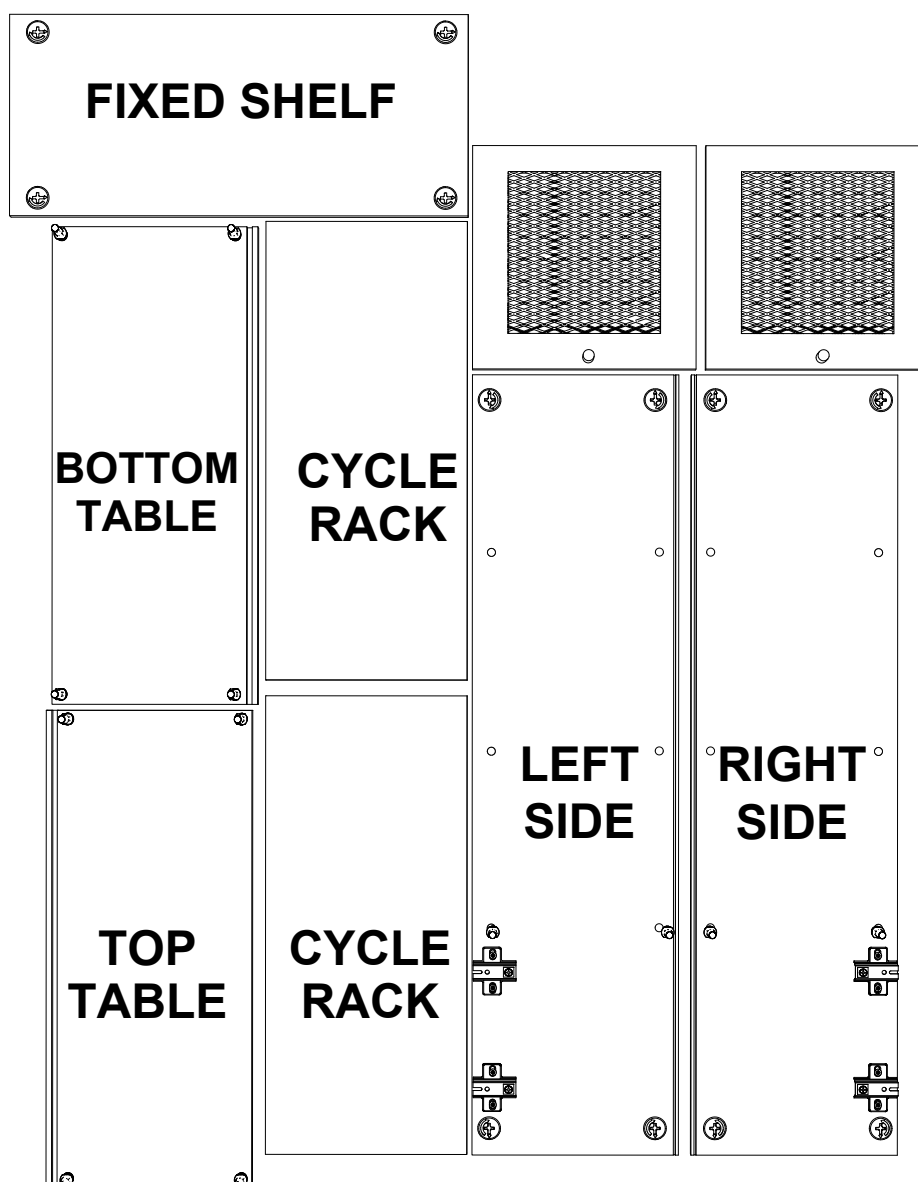
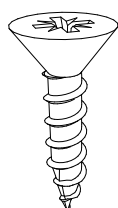


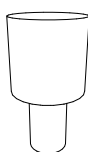
# Calvin Bookshelf Hazeran



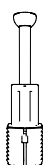
## ACCESSORY LIST



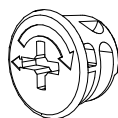
3,5x18 SCREW



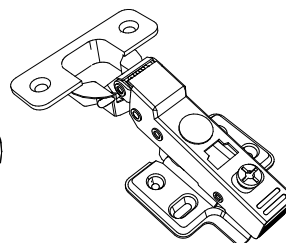
SHELF PIN



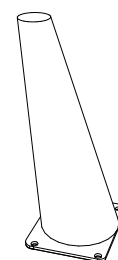
MINIFIX SHAFT



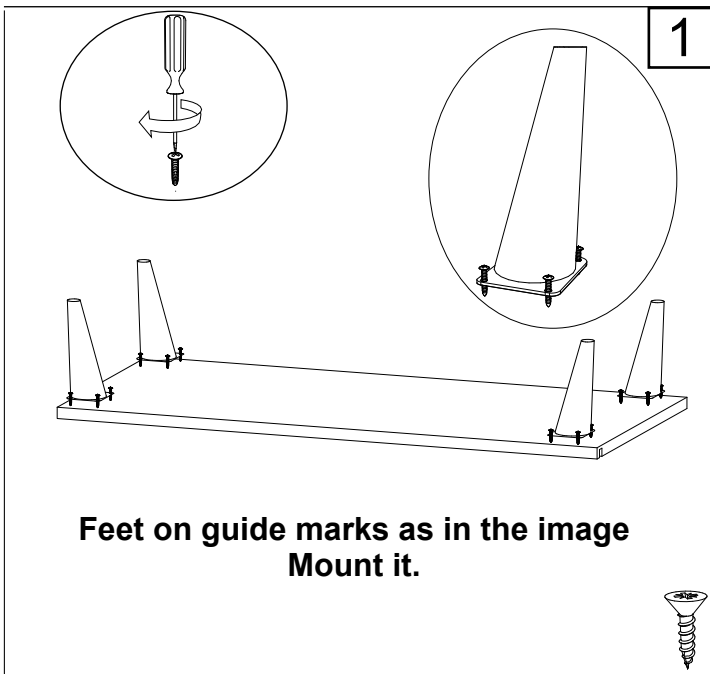
MINIFIX NUT



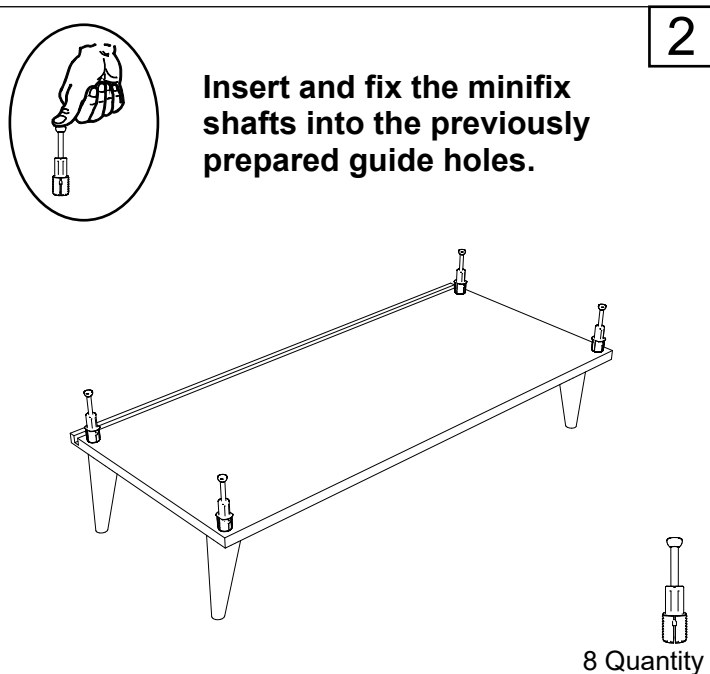
FULL  
CAMEL  
HINGE



WOOD  
LEG

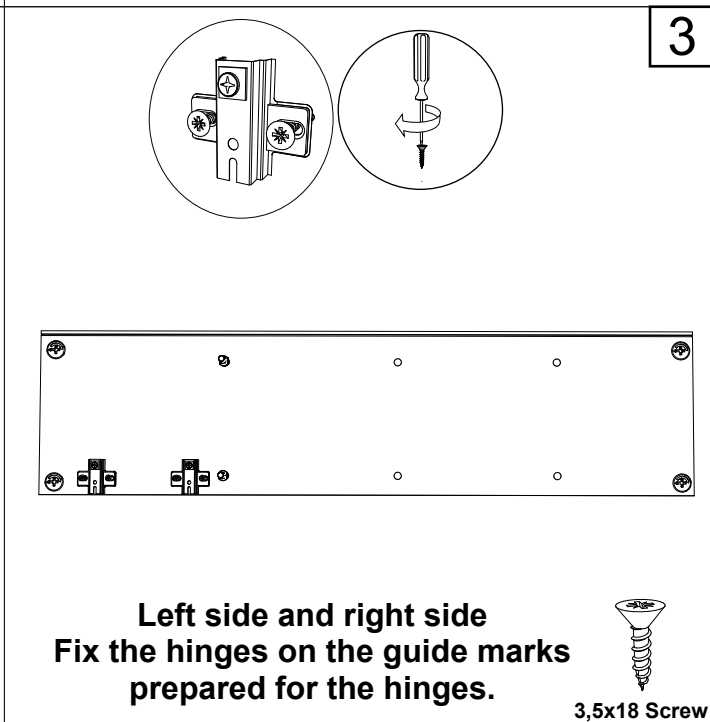


1

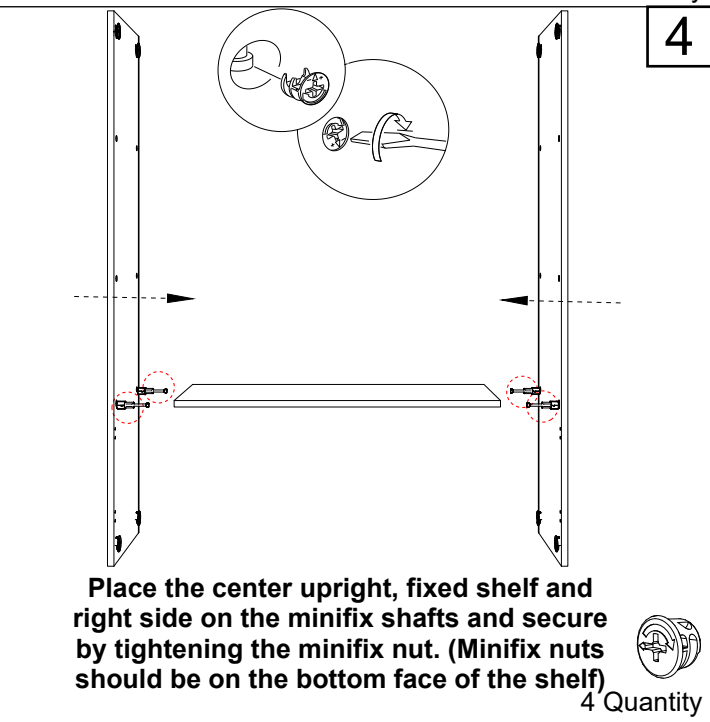


2

8 Quantity

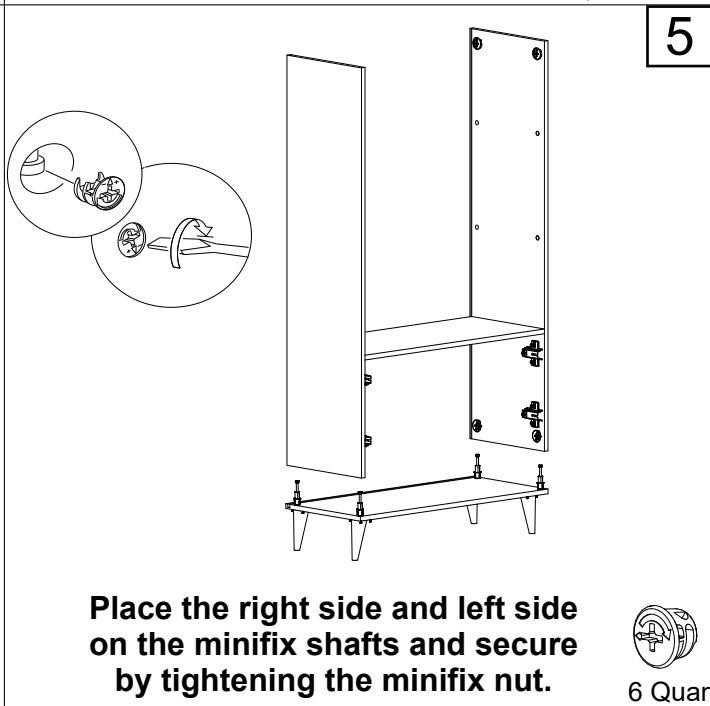


3



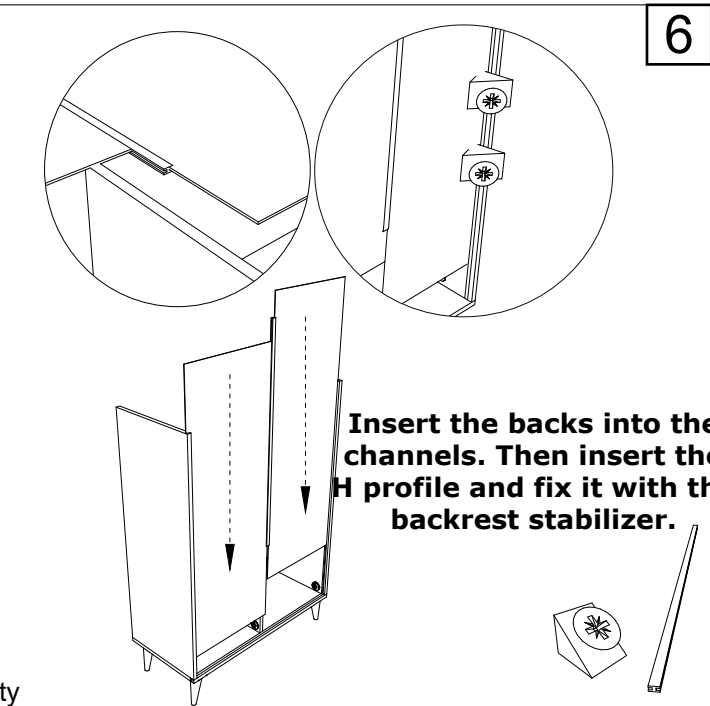
4

4 Quantity

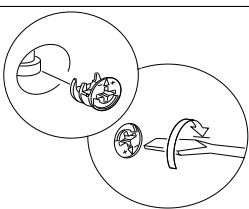


5

6 Quantity



6

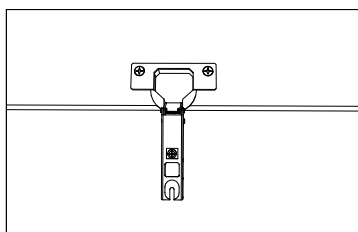
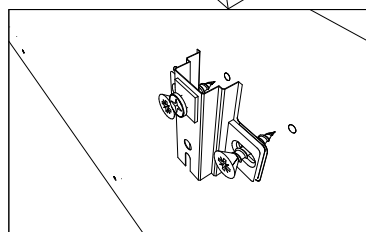
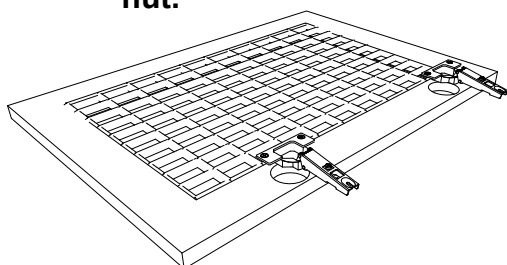
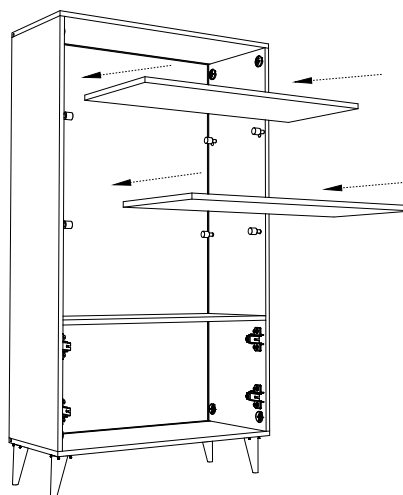


Place the top plate on the minifix shafts and secure it by tightening the minifix nut.

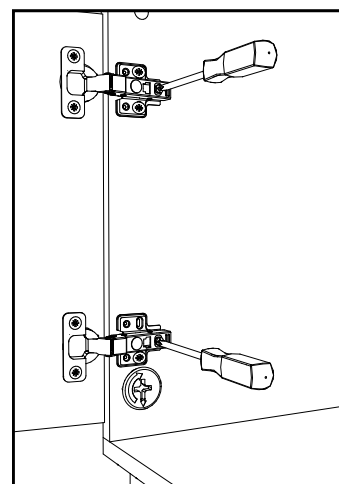


6 Quantity

Before placing the mobile shelf  
Mount the shelf pins on the slots as  
shown in the image.

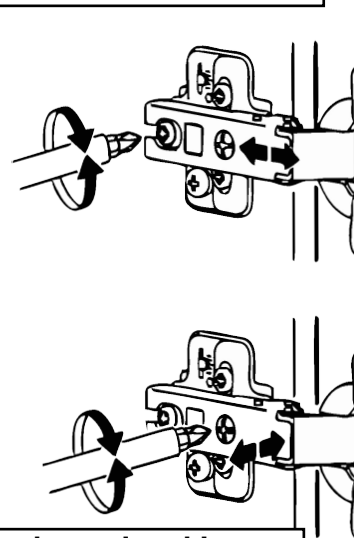
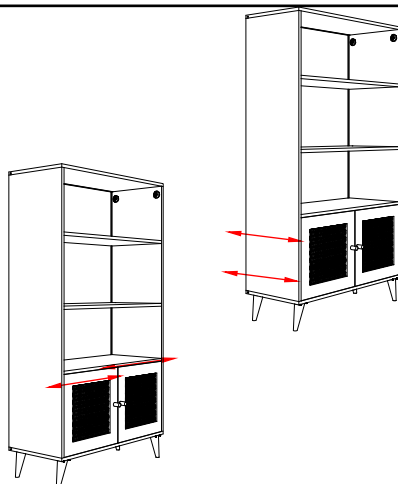


Mount the hinge strikes on the tracks as shown in the image.



Place and secure the hinges as shown in the image.

You can adjust the asymmetrical stance between the lids by loosening the screw, positioning it in the desired position and then tightening it.



The distance between the lids can be adjusted by loosening this screw, positioning it in the desired position and then tightening it.

If you are satisfied with our service, you can honor us with your positive ratings and comments and contribute to other customers to shop with us. you can be found.