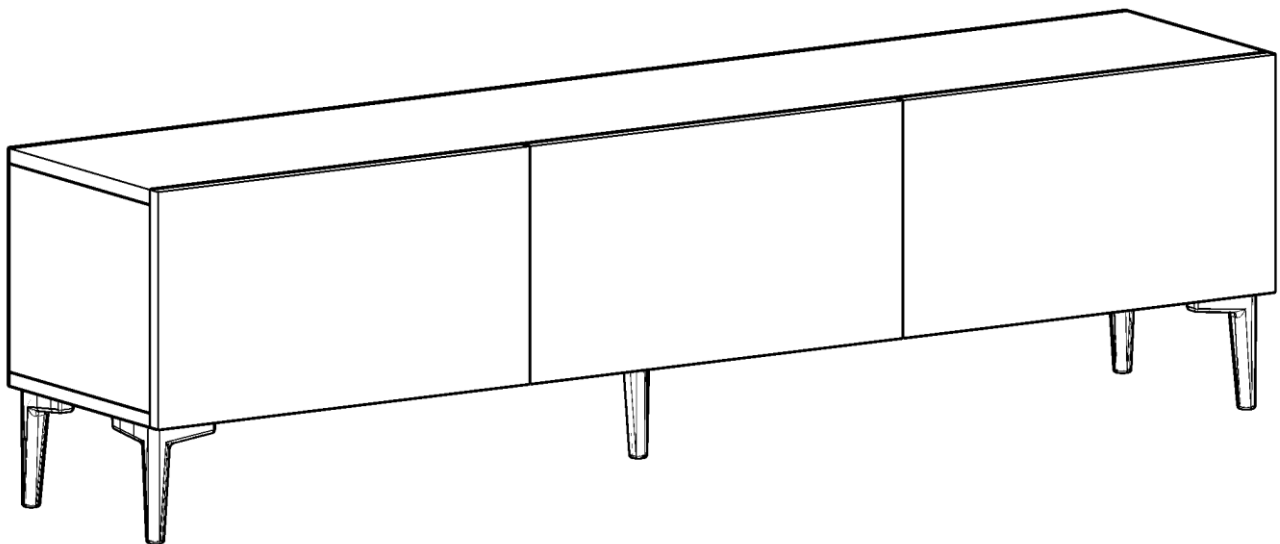
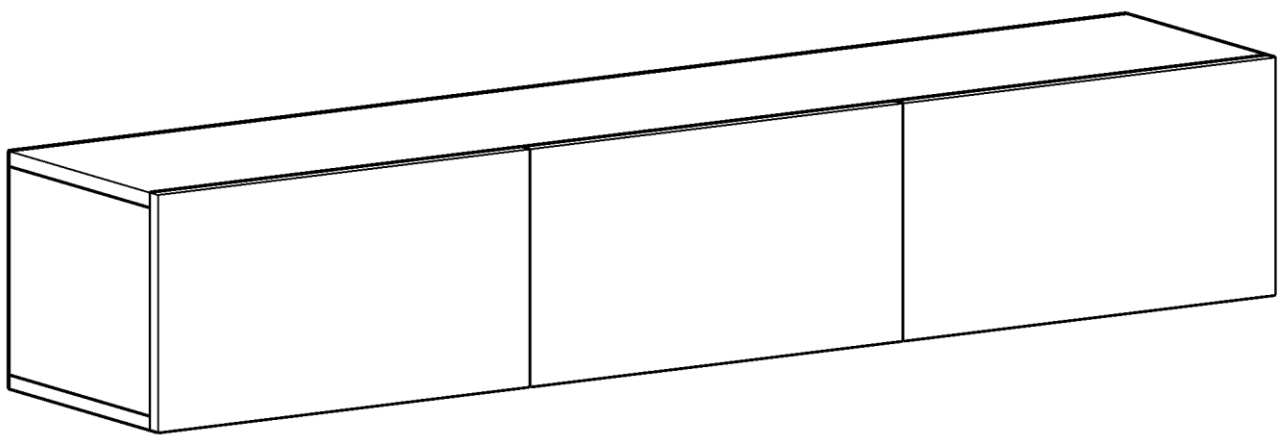


ARTEMIS TV STAND

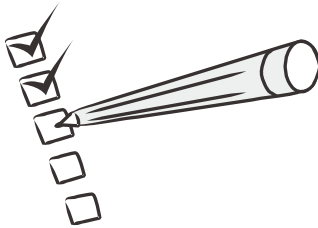
TV1079



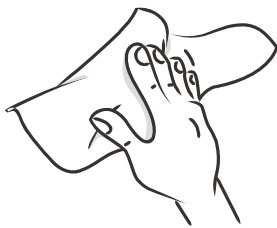
Dear Customer,

We design and produce our products for people to love and have fun with them as we do.

The product you bought was subjected to all sorts of tests and control before sending out to you.



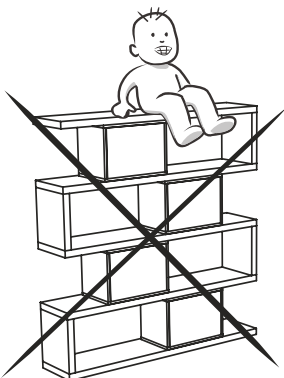
Before start assembling, please check the whole components and accessories according to the lists. If you bought more than one product, to prevent confusion be sure that you completed the first product. Then start the other product's assembling.



Before start assembling, please clean all the components with a damp cloth. Also for usual cleaning, this will be enough.



Although all the products are produced and packed carefully, sometimes happen that some component is damaged during the transportation. In such a case please check the missing or damaged part and do not hesitate to contact us.



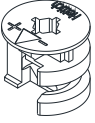
Do not use your furniture for out of purposes. If you would like to use it, please contact us for further questions.

Do not directly contact your furniture with excessive heat, cold and humidity because the product can be affected..

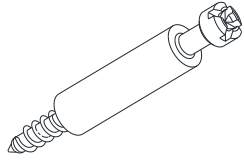
ATTENTION !!

Minifix is the main connection material used in dekorister products.
Before starting assembly, please check the drawings below...

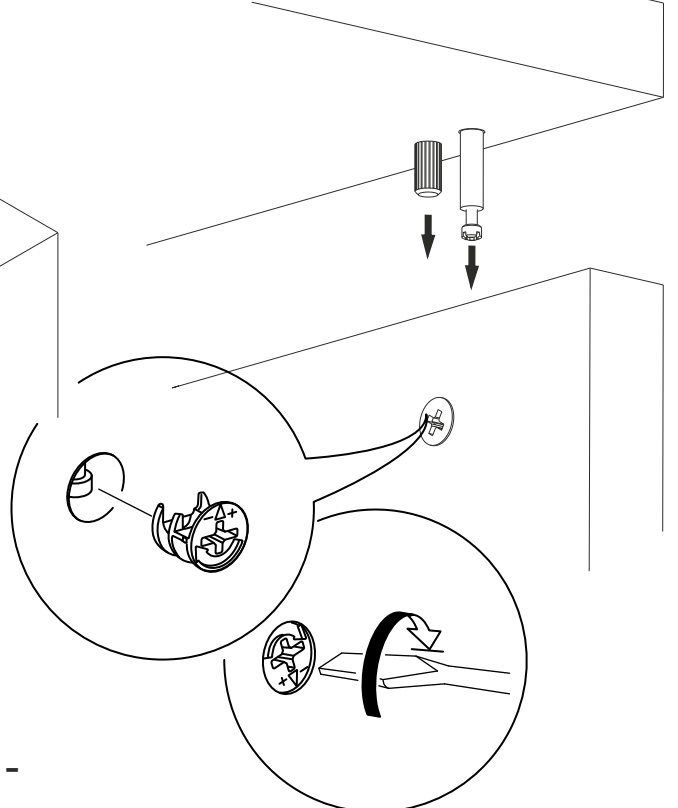
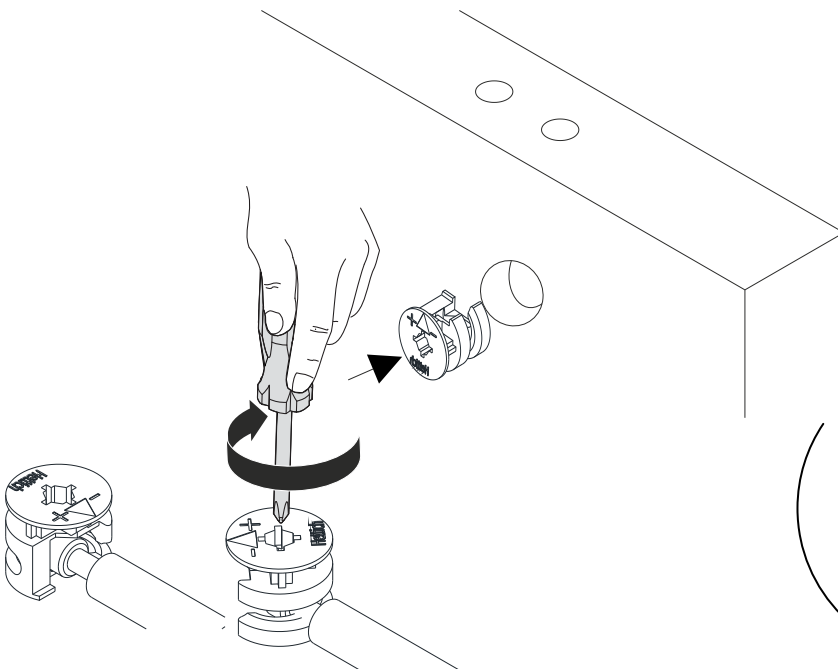
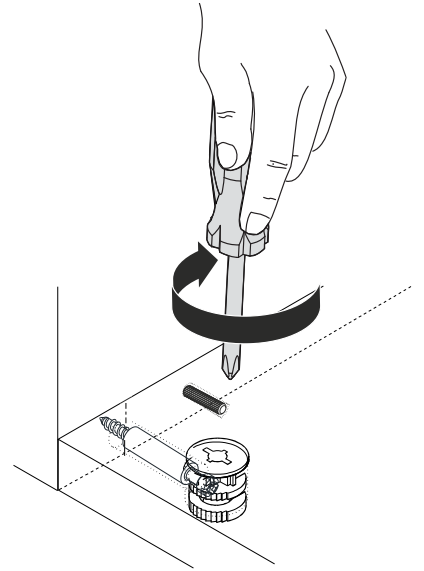
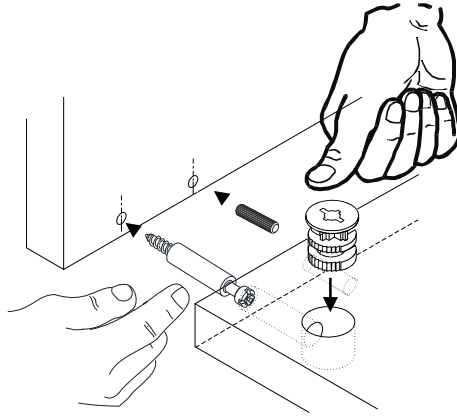
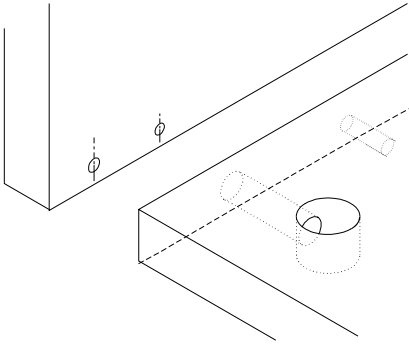
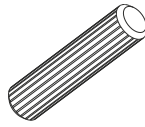
Minifix Gvde



Minifix Mil

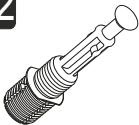



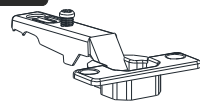
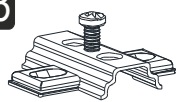
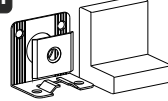


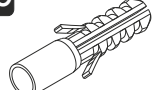
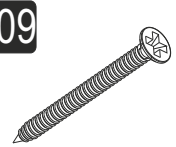
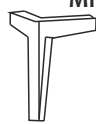



Kavela

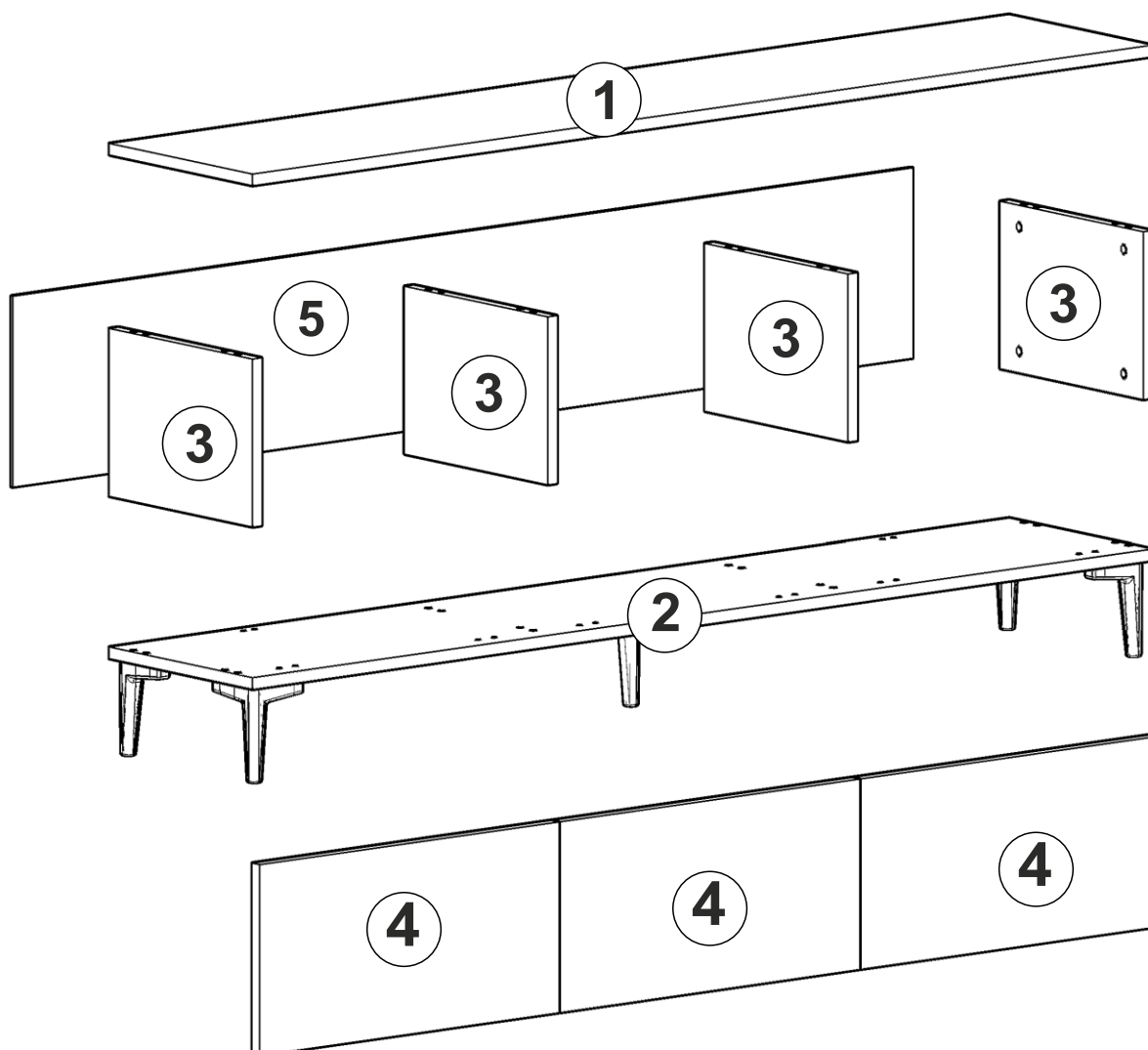


ACCESSORY LIST

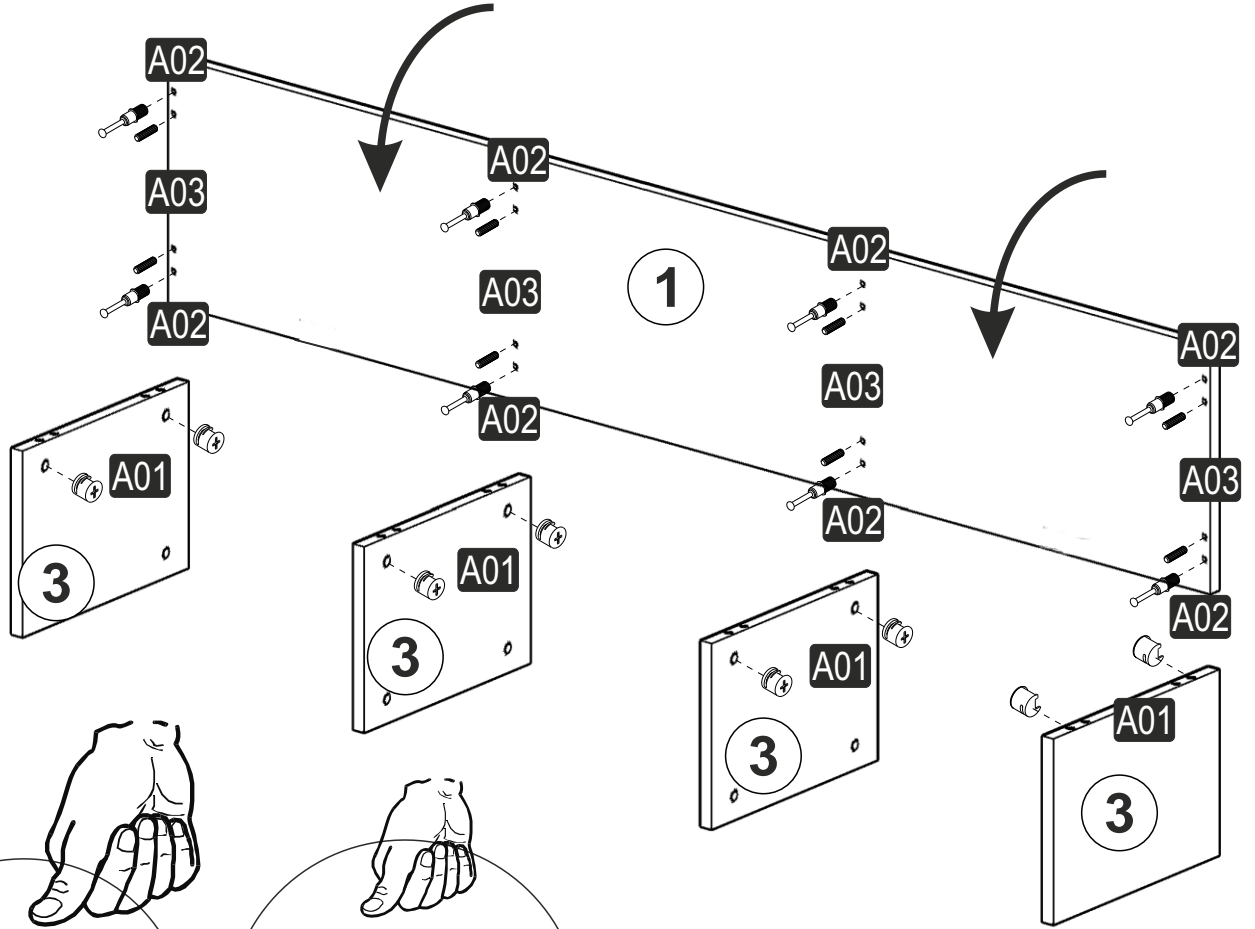
ARTEMIS

A02  8x34 16x	A01  15x14 16x	A03  8x30 16x	A28  30x	C01  6x
A13  6x	A41  4x	A10  35x	A42  20x	A08  4x
A09  4x	A45  5x	A04  16x	0x	0x

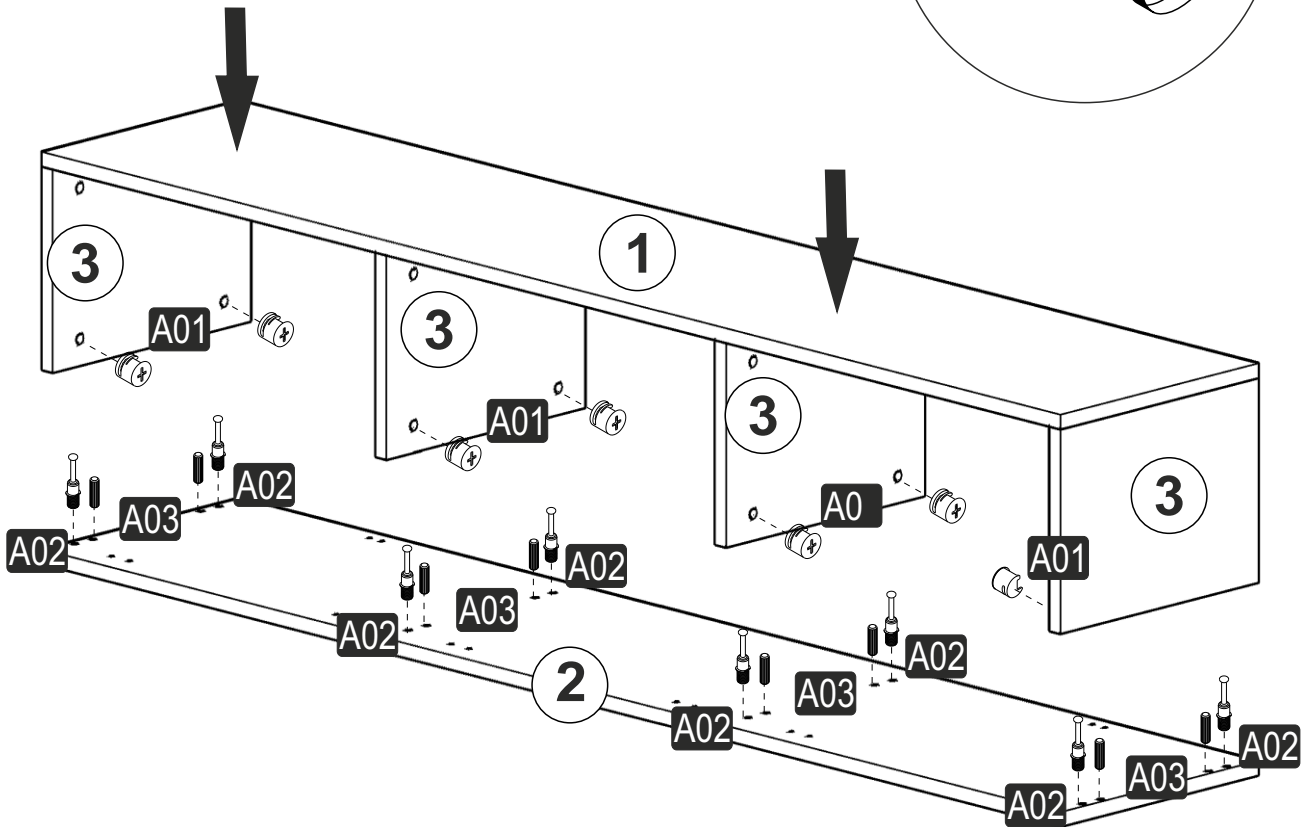
GENERAL VIEW



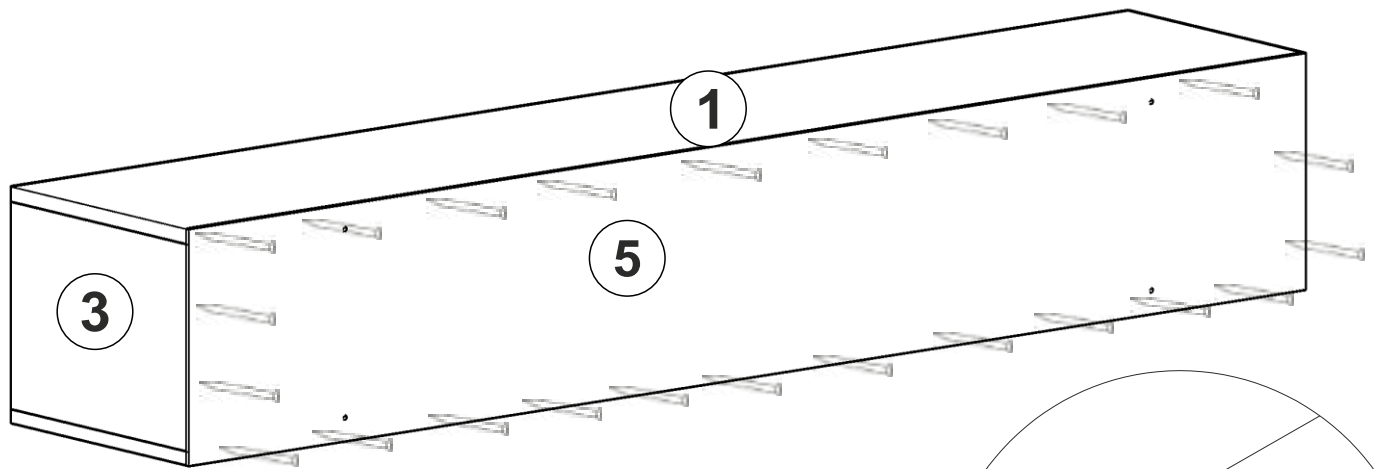
1



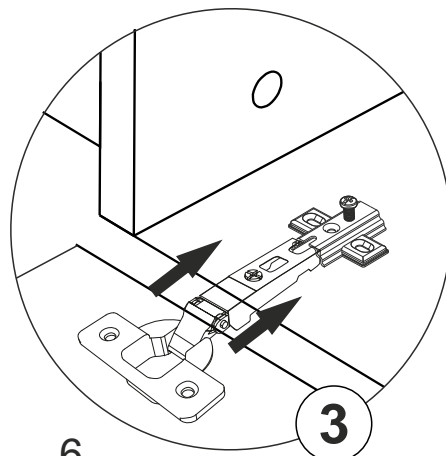
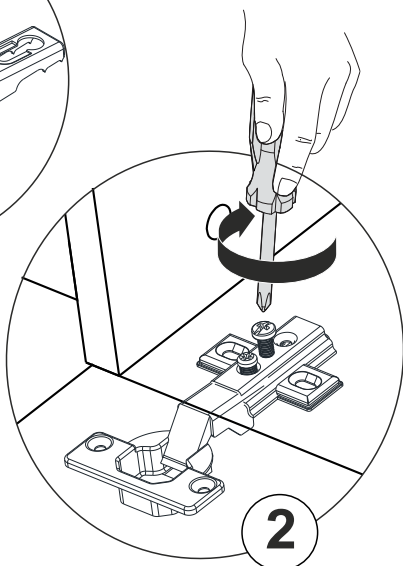
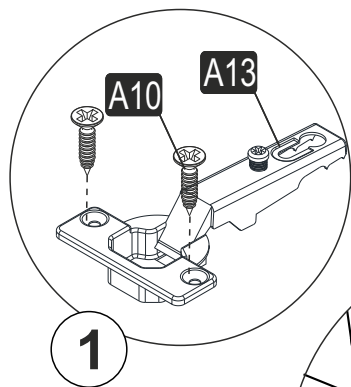
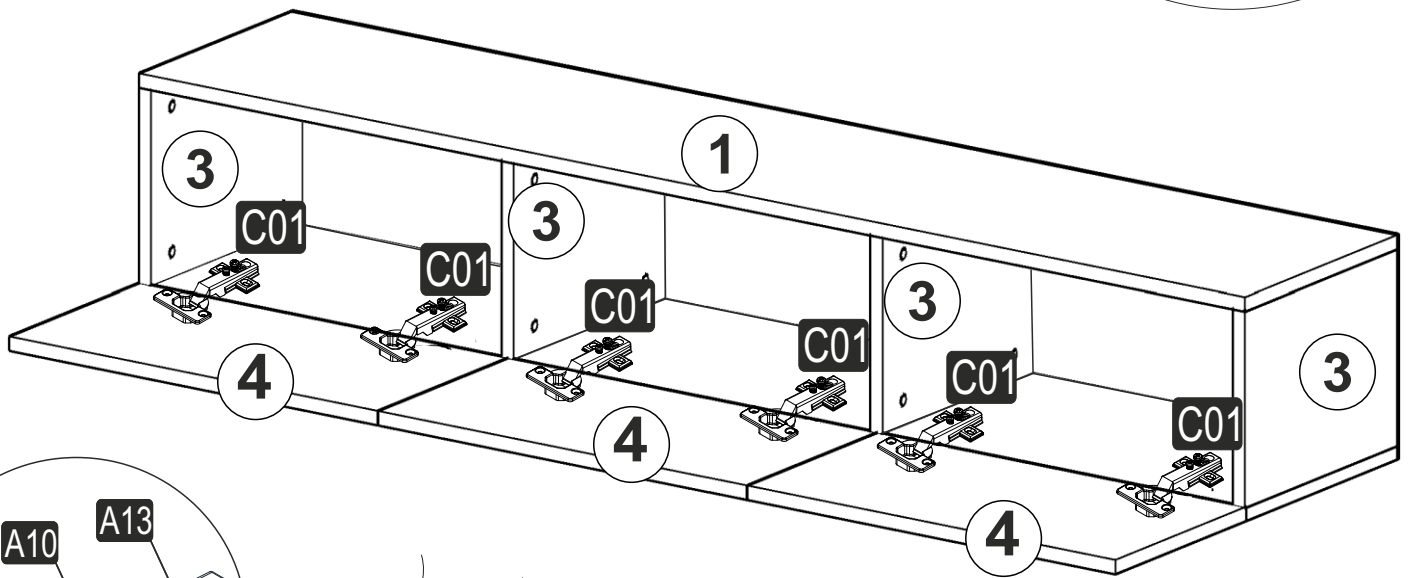
2

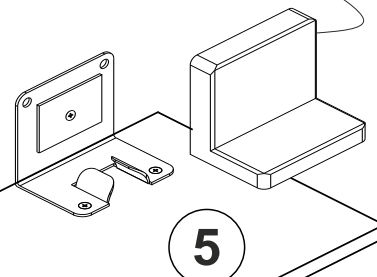
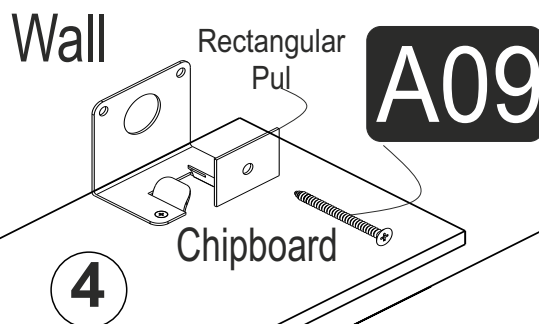
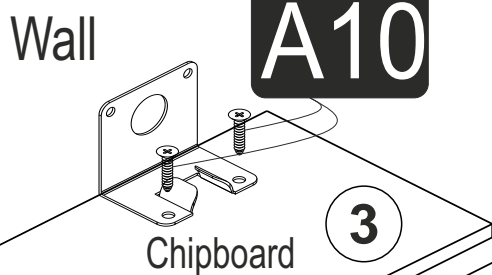
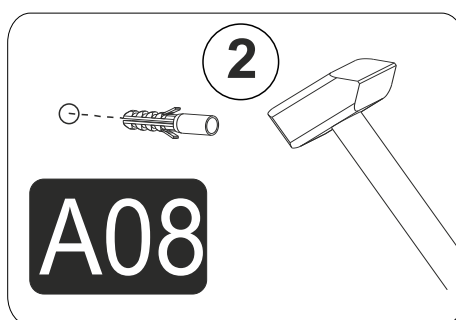
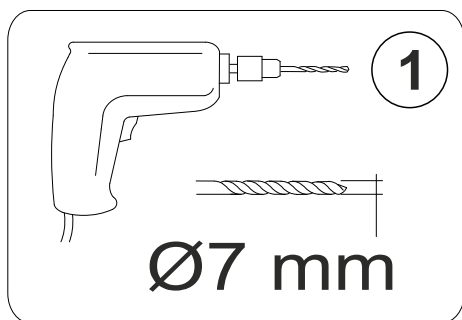
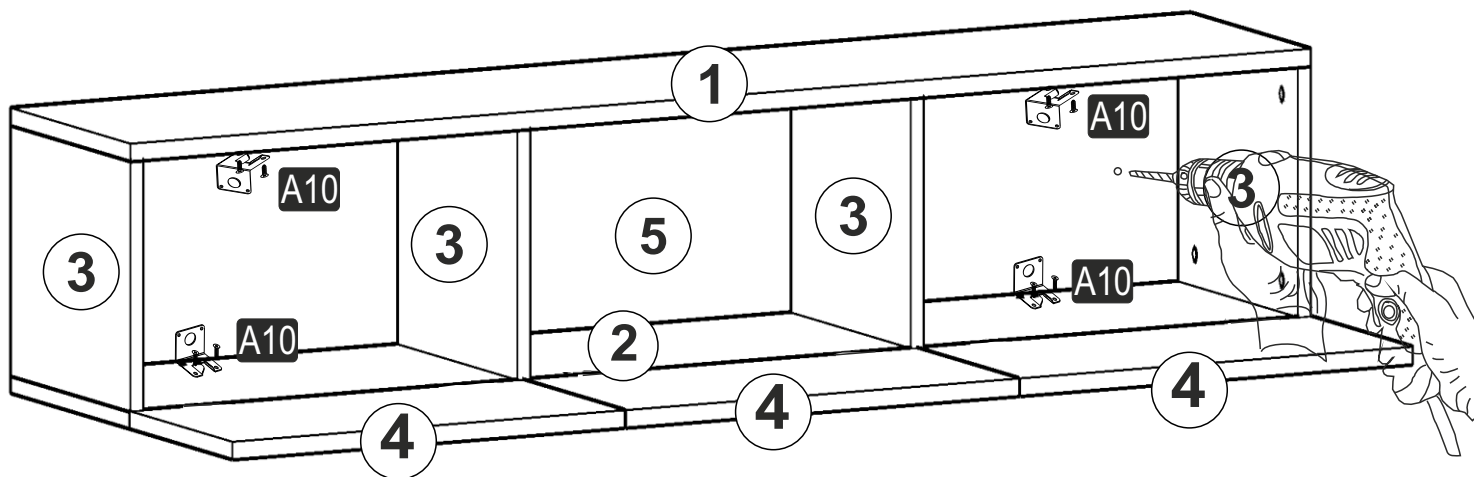


3



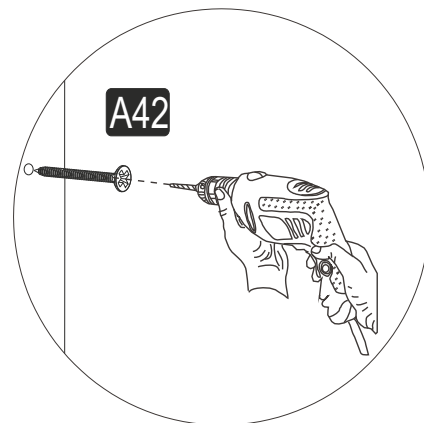
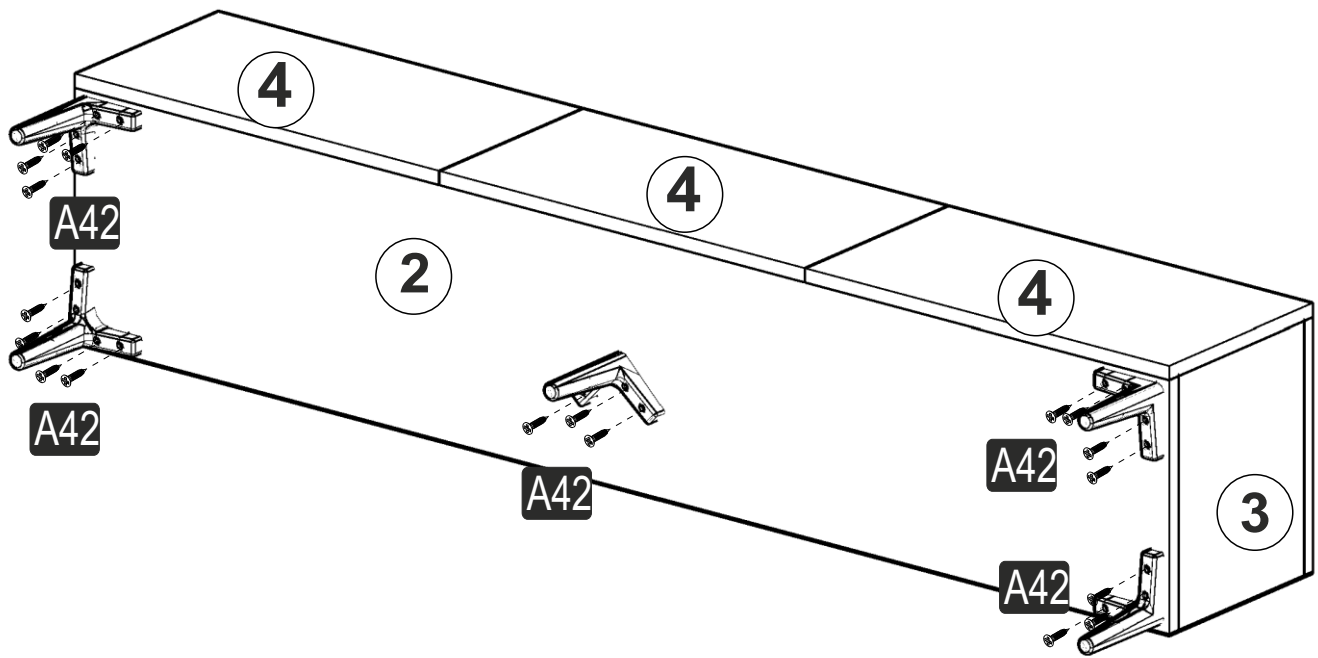
4





6

This unit can be used on the floor by mounting the legs.



You can use the product both as free-standing and wall-mounted.

When the product is mounted on the plasterboard wall,do not put television on it

Use the 'study finder' when mounting the product on a plasterboard wall